

SOLID STATE RELAYS

Mechanical layout and dimensions
of solid state relays



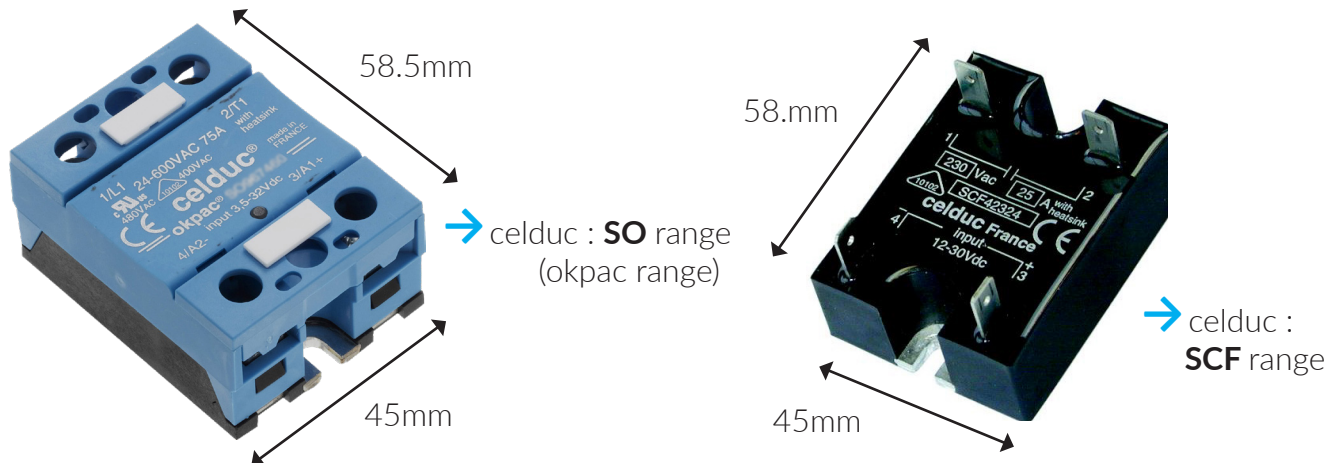
In terms of mechanical layout and dimensions of solid state relays, **there are several housing that have become industry standard**, the most popular one is the hockey puck style housing. Now you can find different package styles allowing the SSRs to be mounted in several different ways, depending on the preferences and the space availability of the user, such as: panel mount, DIN Rail mount and PCB mount.

CELDUC RANGE

- Panel Mount Single phase SSRs p 2-3
- DIN-Rail Mount Single phase SSRs p 4
- PCB Mount Single phase SSRs p 5
- Panel Mount Two-phase SSRs p 6
- Panel Mount Three-phase SSRs p 7
- DIN-Rail Mount Three-phase SSRs p 7-8
- PCB Mount Three-phase SSRs p 8

PANEL MOUNT single phase SSR

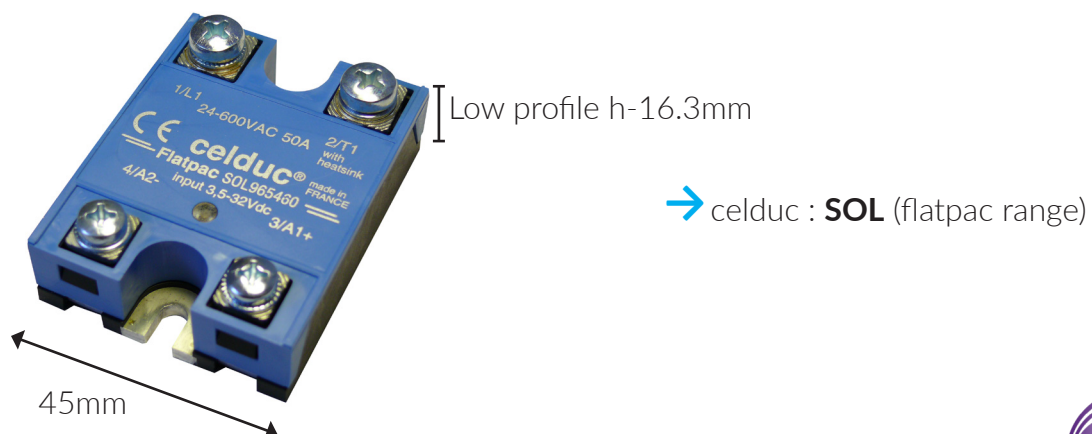
1- “Hockey puck” package : the most common package style



2- The 22.5mm wide SSR solution



3- Flat mounting surface



4- Miniature Relays

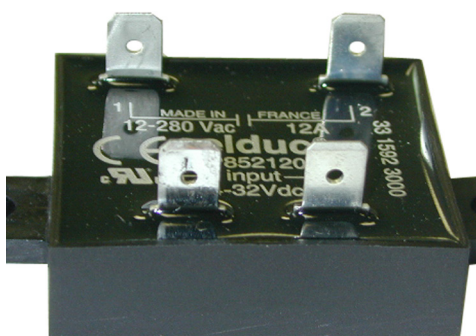


35.5mm

21.4mm

→ celduc : **SF5** range

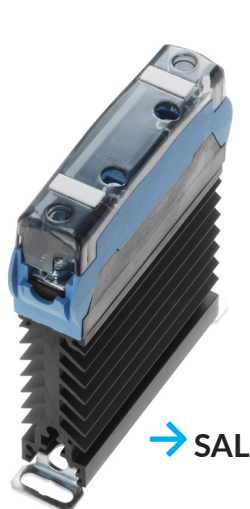
5- Other housing



→ celduc : **SP7/SP8** range

Compact design for low-profile applications.

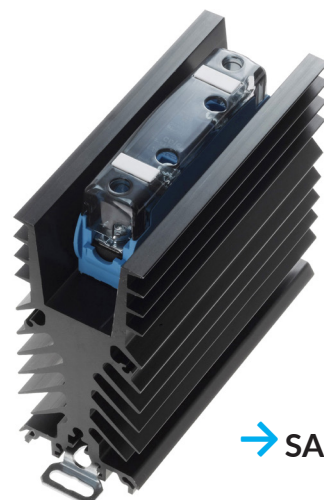
DIN-RAIL MOUNT single phase SSR



→ SAL



→ SAM



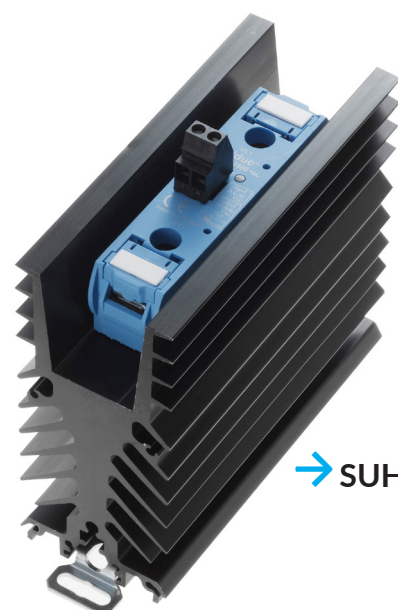
→ SAH



→ SUL



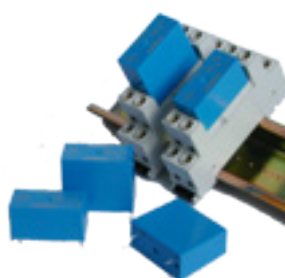
→ SUM



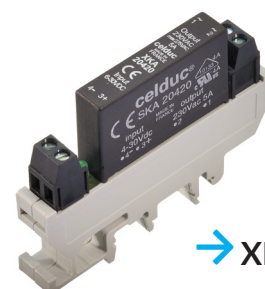
→ SUH



→ SLA
with base
ESD01000



→ SPA/STA
with base
ESD05000

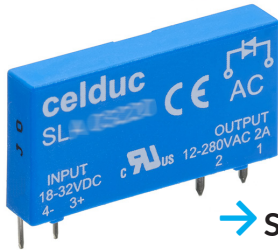


→ XKA



→ XKH

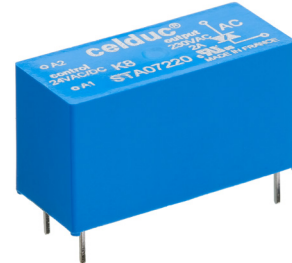
PCB MOUNT single phase SSR



→ SLA



→ SPA



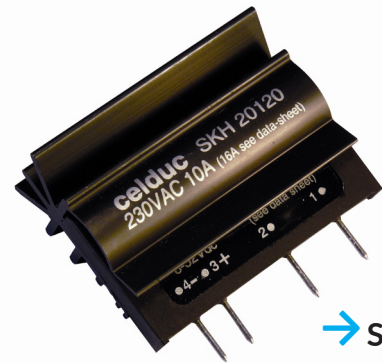
→ STA



→ SKA/SKB



→ SKL



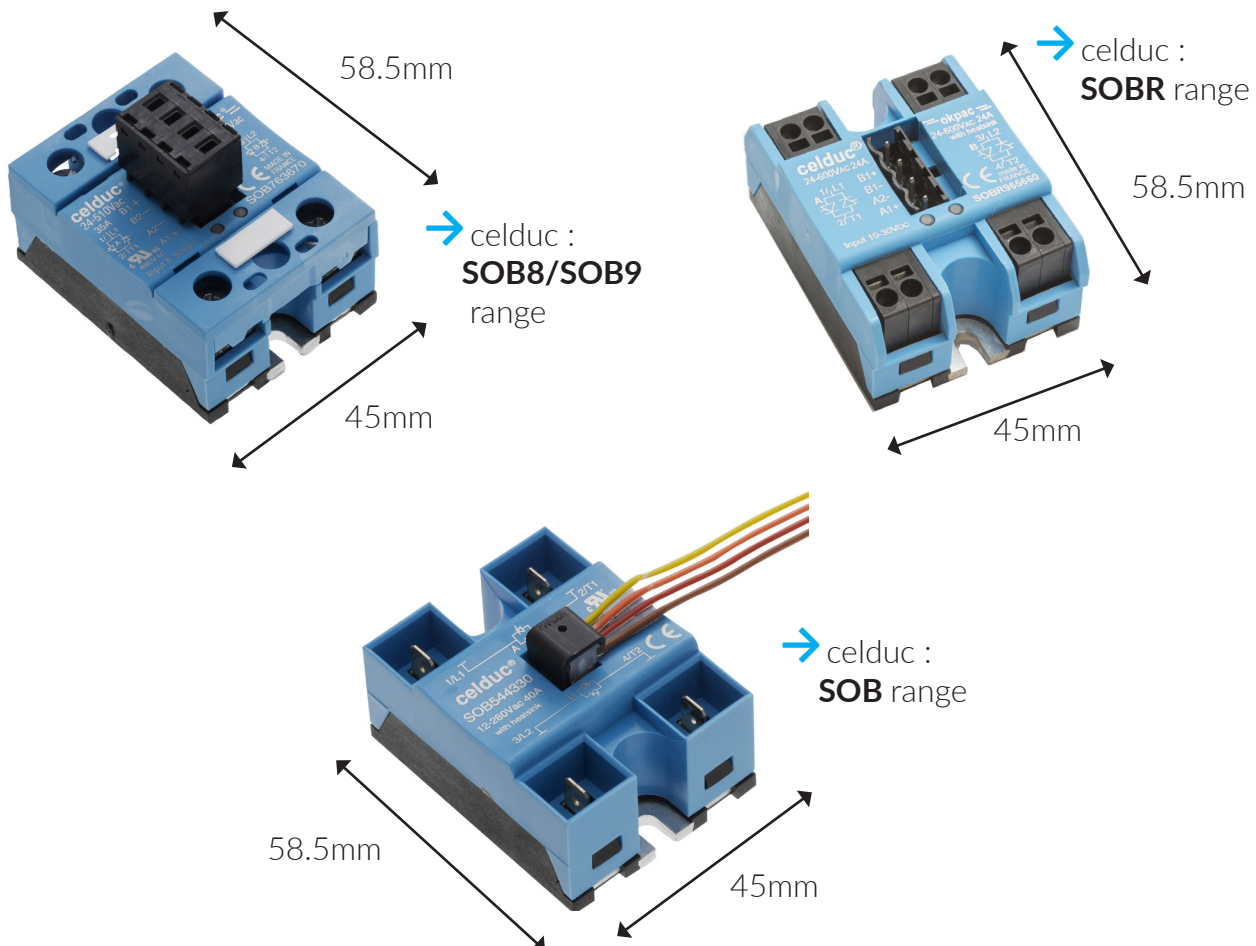
→ SKH



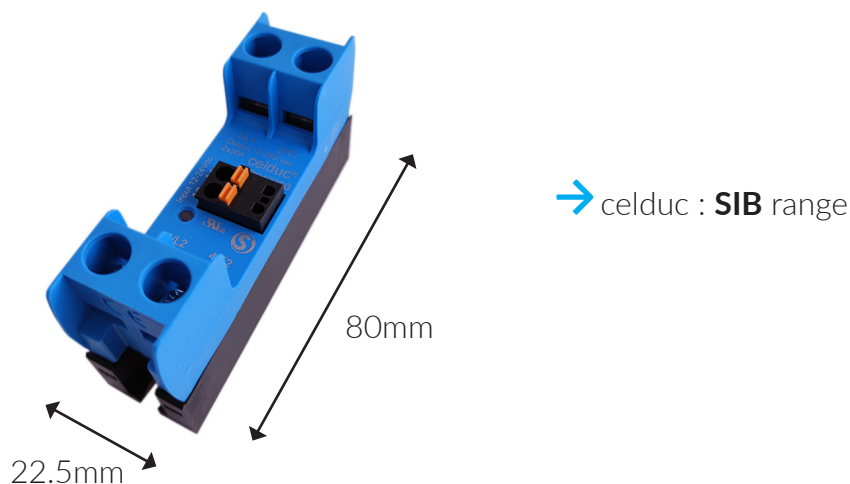
→ SN8

PANEL MOUNT two-phase SSR

1- “Hockey puck” package : 45mm enclosure

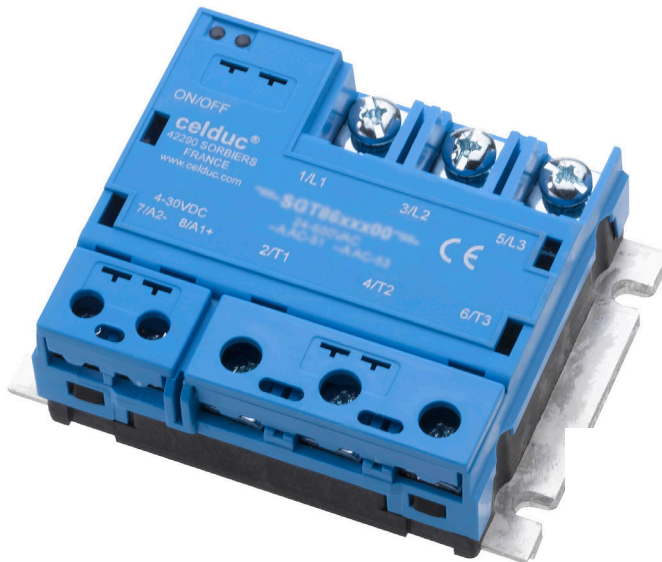


2- The 22.5mm wide SSR solution



PANEL MOUNT three-phase SSR

1- Version with 100mm installation width



→ celduc :
SGB / SGT / SGR ranges

2- Compact 45mm version



→ celduc :
SMB / SMT / SMR
ranges

DIN-RAIL MOUNT three-phase SSR



→ celduc :
SMT range
«Ready to use» version



→ celduc : **SGT** range
«Ready to use» version

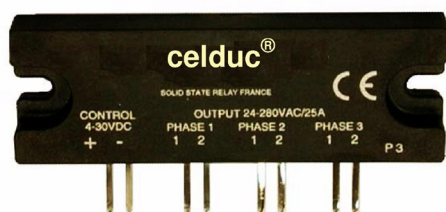


→ celduc : **SGT** range ←
«Ready to use» version



→ celduc : **XKM** range

PCB MOUNT three-phase SSR



→ celduc : **SHT** range

Thanks for reading



www.celduc-relais.com